

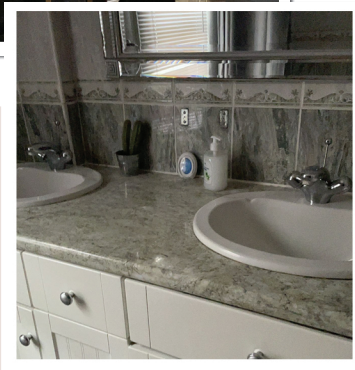


## ABOUT REFINESTART

RefineStart aim to work in partnership with young people, local authorities, families and agencies to:

- Provide a high-quality support service to young people
- Provide a safe environment for young people to develop the skills necessary for living independently
- Help young people make the transition to independence in a planned and supportive way

Our staff are well trained to assist young people to gain life skills, confidence building and raising self-esteem, through individual support sessions, house activities, and group work.



## CLIENT GROUP

Our main services are provided to young people between the ages of 18–21 years. However, we also provide support services to young people with learning difficulties or for young people who may not be able to move on or live on their own in their permanent accommodations post 18 years of age due to various reasons such as;

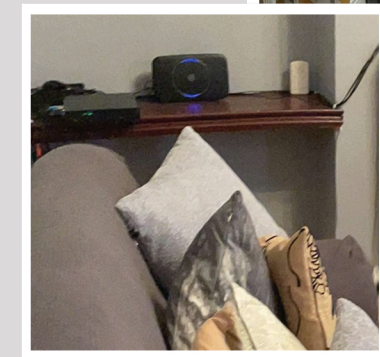
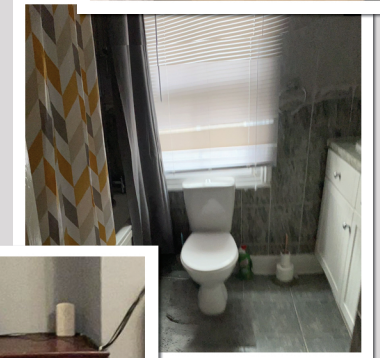
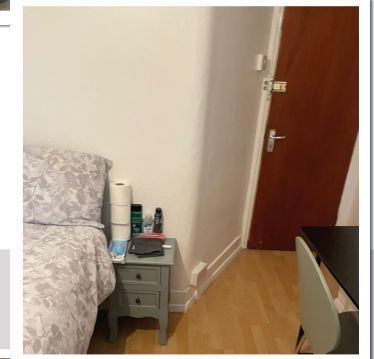
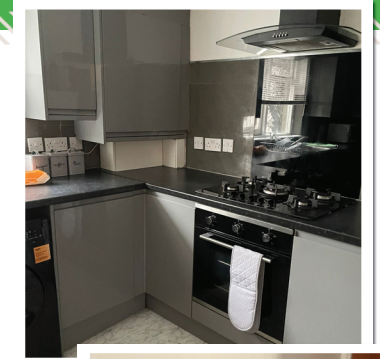
- \* Multiply placement moves which might have disrupted their care planning
- \* Young people with mental health issues who may not be able to manage their own accommodation without support
- \* Young people with learning difficulties who may not be able live independently without support
- \* Young people who may lack the requisite semi-independent skills due to various reasons and are unable to manage living on their own.
- \* Young people with gang affiliated and CSE concerns who may not be able to live independently post 18 years and requires safeguarding and ongoing support
- \* Young people whose permanent accommodations are not ready due to various reasons and who may be bidding for their permanent accommodation



## STAFFING

Staffing at RefineStart include a dedicated team of experienced support worker and Social Workers who are genuinely motivated to make a difference in the lives of young people. All our staff are DBS checked.

Our keyworkers work in partnership with Social Workers by being involved in meetings, contributing to formulating young people's care plans and being involved in the pathway planning process of young people placed at Pathfinders. Our keyworkers share information with Social Workers on regular basis and provides weekly and monthly reports are and when required.



## ACCOMMODATION

The property is located in the Camberwell, London Borough of Southwark close to Kings College Hospital and Tube Station. It is a four bedroom HMO with 2 bathrooms , with all modern facilities.

The home is located within easy reach of public transport, mainline stations, and buses. There is a library close by, and easy access to schools, colleges, and local hospitals. All areas in and around the premises are designated as non-smoking areas.

**WE TAILOR THE SUPPORT TO THE INDIVIDUAL NEED,  
WE OFFER RESPITE AS WELL AS EXCELLENT SEMI-INDEPENDENT CARE,  
WE OFFER A FAMILY EXPERIENCE,**